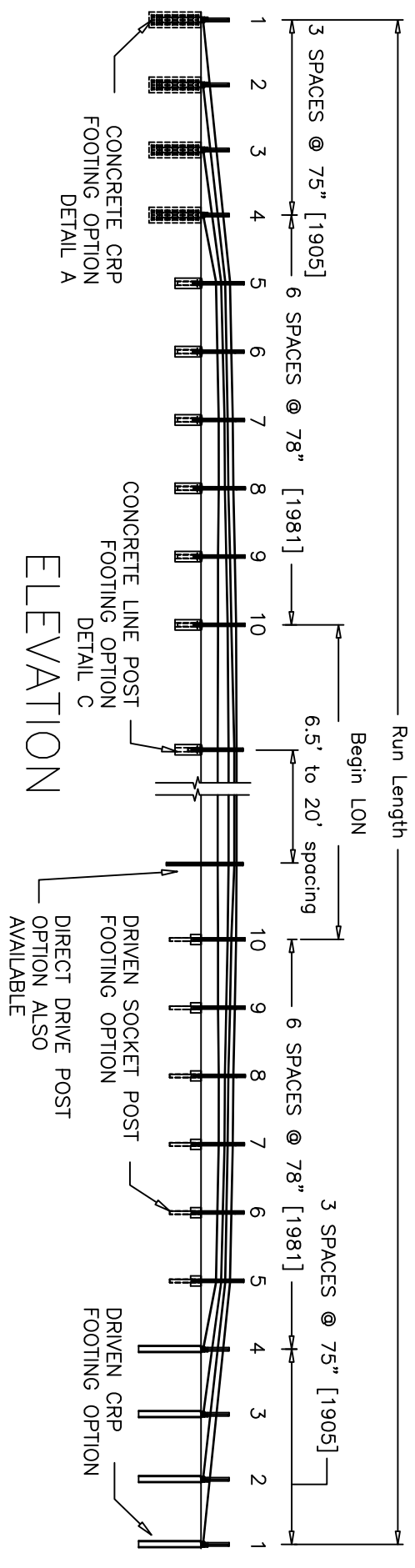


PLAN

Can be place at edge of roadway

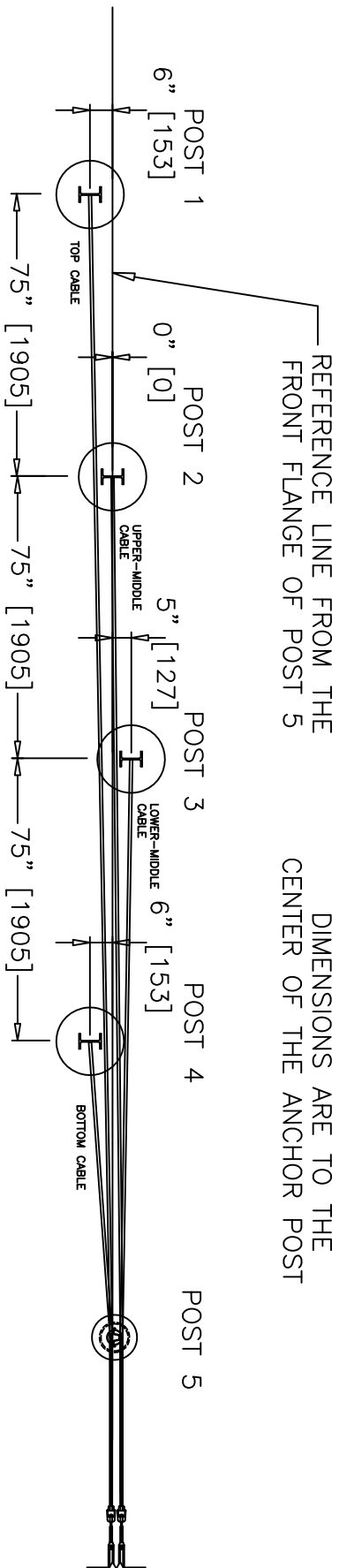


ELEVATION

NU-CABLE™ - TL4 SYSTEM WITH CRP

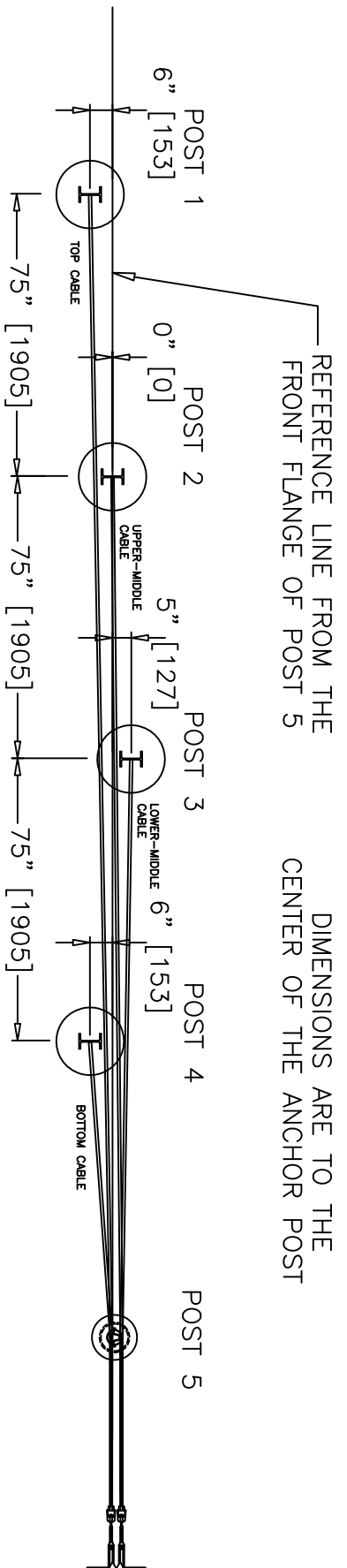
Revisions			Project No.			Date			Drawn By			Scale		
No.	Date	By	CK.	400001	2009/01/28	RM								
1.	7/17/08	CH												
2.	7/28/09	CH												
3.	10/1/09	CH												
4.	5/23/11	CH												
5.														

Nucor Steel Marion Inc  
912 Cheney Ave, Marion OH 43302



# CRP IN CONCRETE FOOTING POST POSITIONS

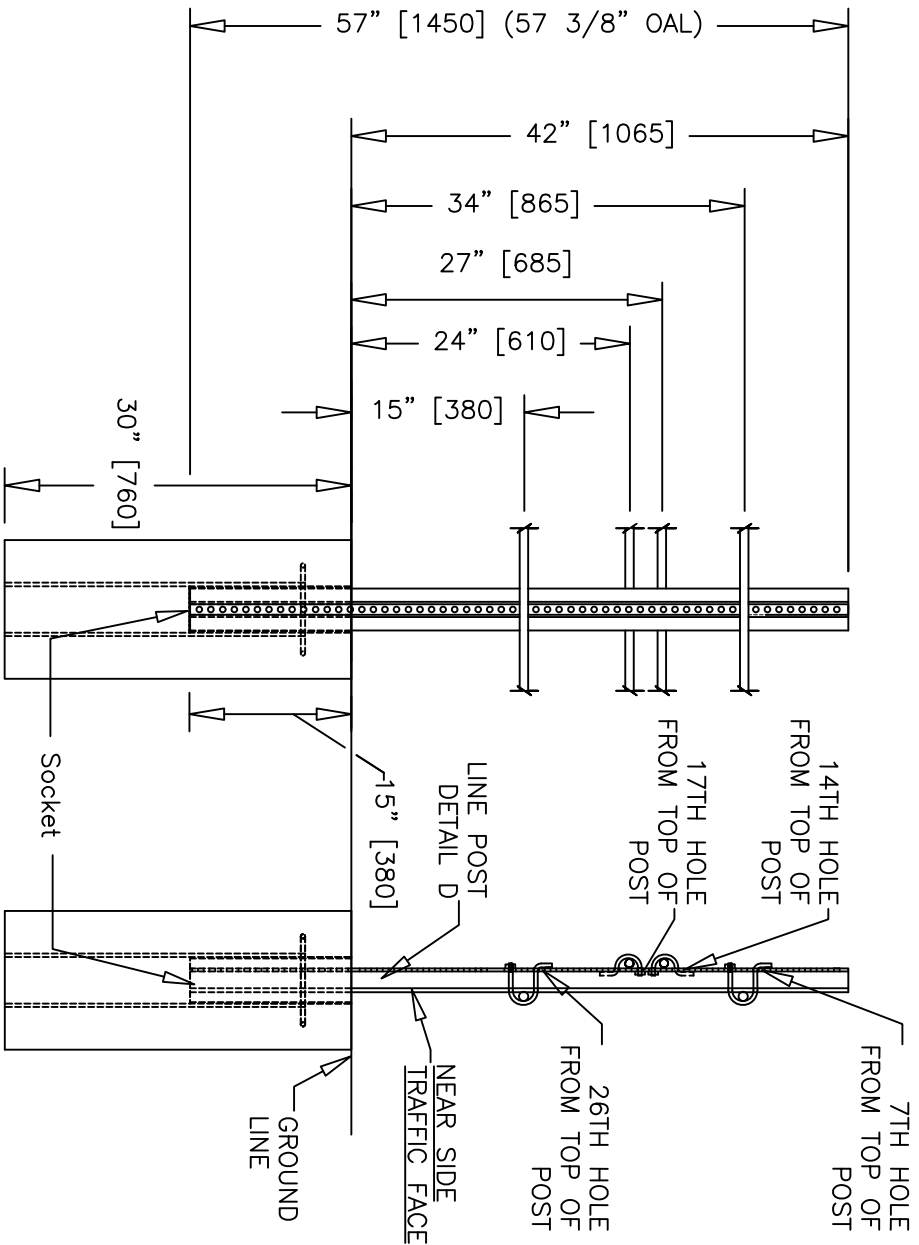
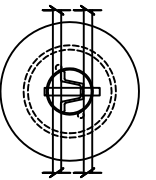
<b>NU-CABLE™ - TL4 SYSTEM WITH CRP</b>				
<b>Revisions</b>				
No.	Date	By	CK	
1.	7/17/08	CH		Nucor Steel Marion Inc 912 Cheney Ave, Marion OH 43302
2.	7/28/09	CH		
3.	10/1/09	CH		
4.	5/23/11	CH		
5.				
Project No.		Date		Sheet No. 2 of 14
400001		2008/03/06		
Drawn By			Scale	
AWC				



# CRP IN CONCRETE FOOTING POST POSITIONS

## NU-CABLE™ - TL4 SYSTEM WITH CRP

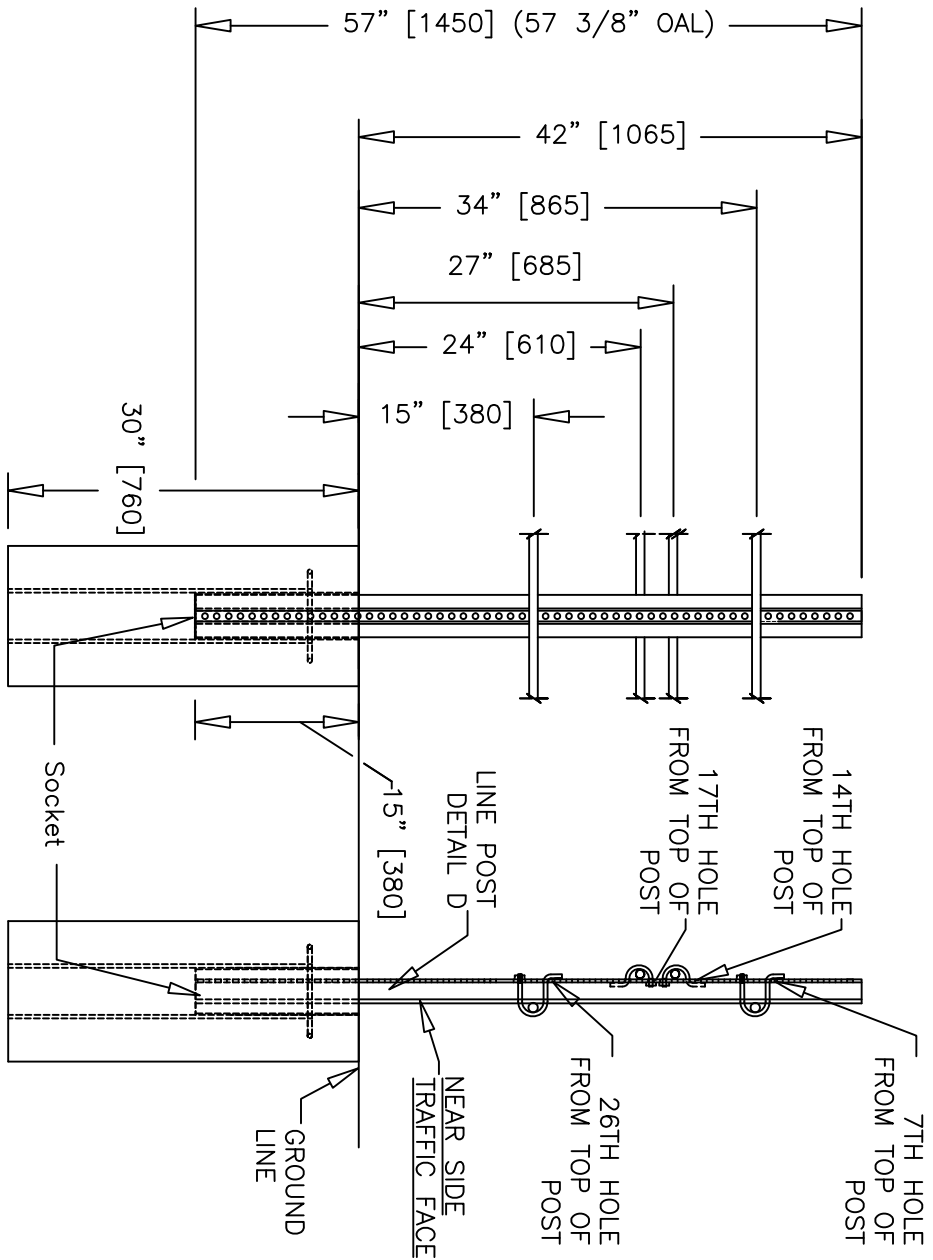
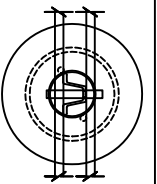
Revisions			Nucor Steel Marion Inc				
No.	Date	By	CK.	Project No.	Date	Drawn By	Scale
1.	7/17/08	CH		400001	2008/03/06	AWC	
2.	7/28/09	CH					
3.	10/1/09	CH					
4.	5/23/11	CH					
5.							



# TERMINAL POST 5

NOTE: CABLE HEIGHTS ARE TO THE MIDDLE OF THE CABLE.

Revisions				NU-CABLE™ - TL4 SYSTEM WITH CRP			
No.	Date	By	CK.	Nucor Steel Marion Inc			
1.	7/17/08	CH		912 Cheney Ave, Marion OH 43302			
2.	7/28/09	CH		Project No.	Date	Drawn By	Scale
3.	10/1/09	CH		400001	2008/03/06	AWC	
4.	5/23/11	CH		Sheet No.			
5.				4 of 14			



# TERMINAL POST 6

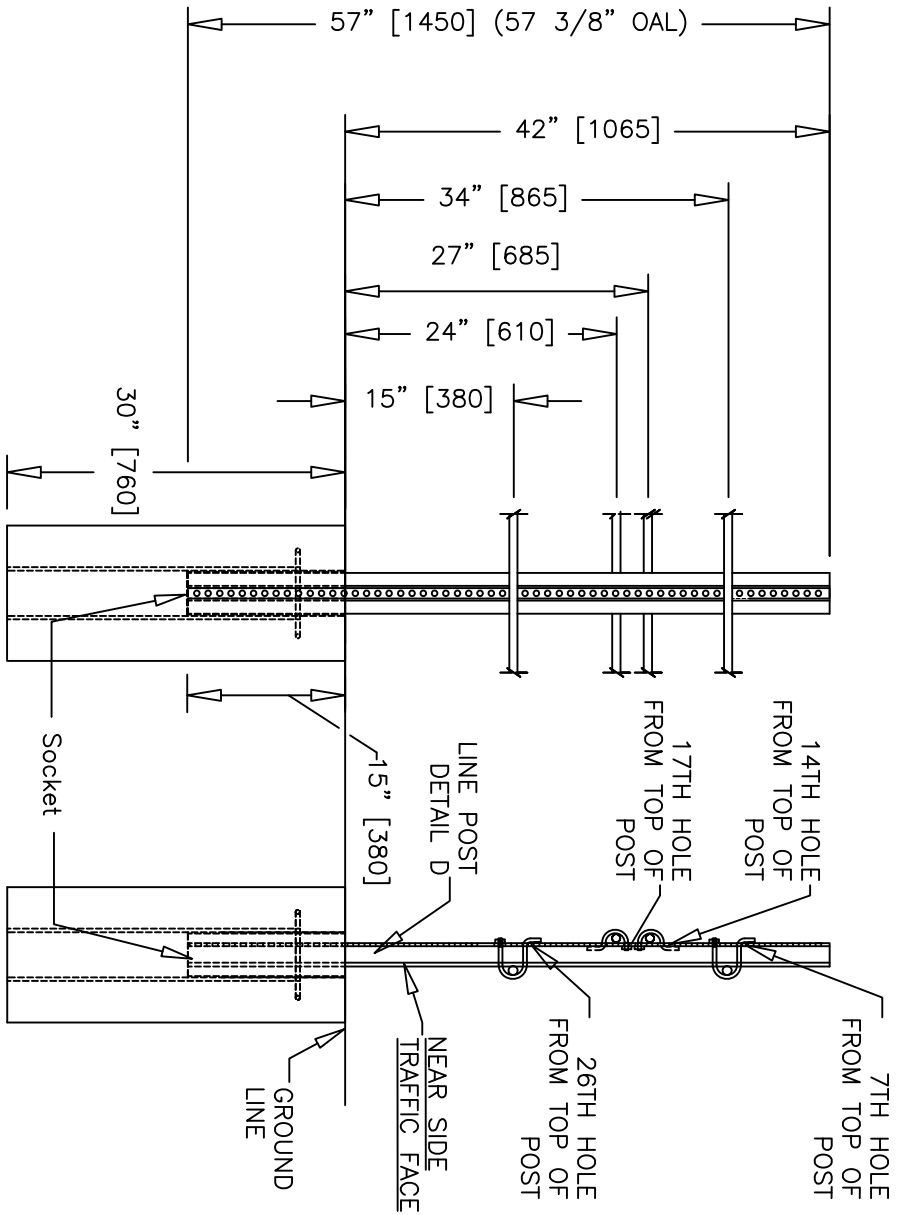
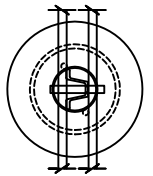
NOTE: CABLE HEIGHTS ARE TO THE MIDDLE OF THE CABLE.

## NU-CABLE™ - TL4 SYSTEM WITH CRP

### Revisions

No.	Date	By	CK.	Project No.	Date	Drawn By	Scale
1.	7/17/08	CH		400001	2008/03/06	AWC	
2.	7/28/09	CH					
3.	10/1/09	CH					
4.	5/23/11	CH					
5.							

Nucor Steel Marion Inc  
912 Cheney Ave, Marion OH 43302

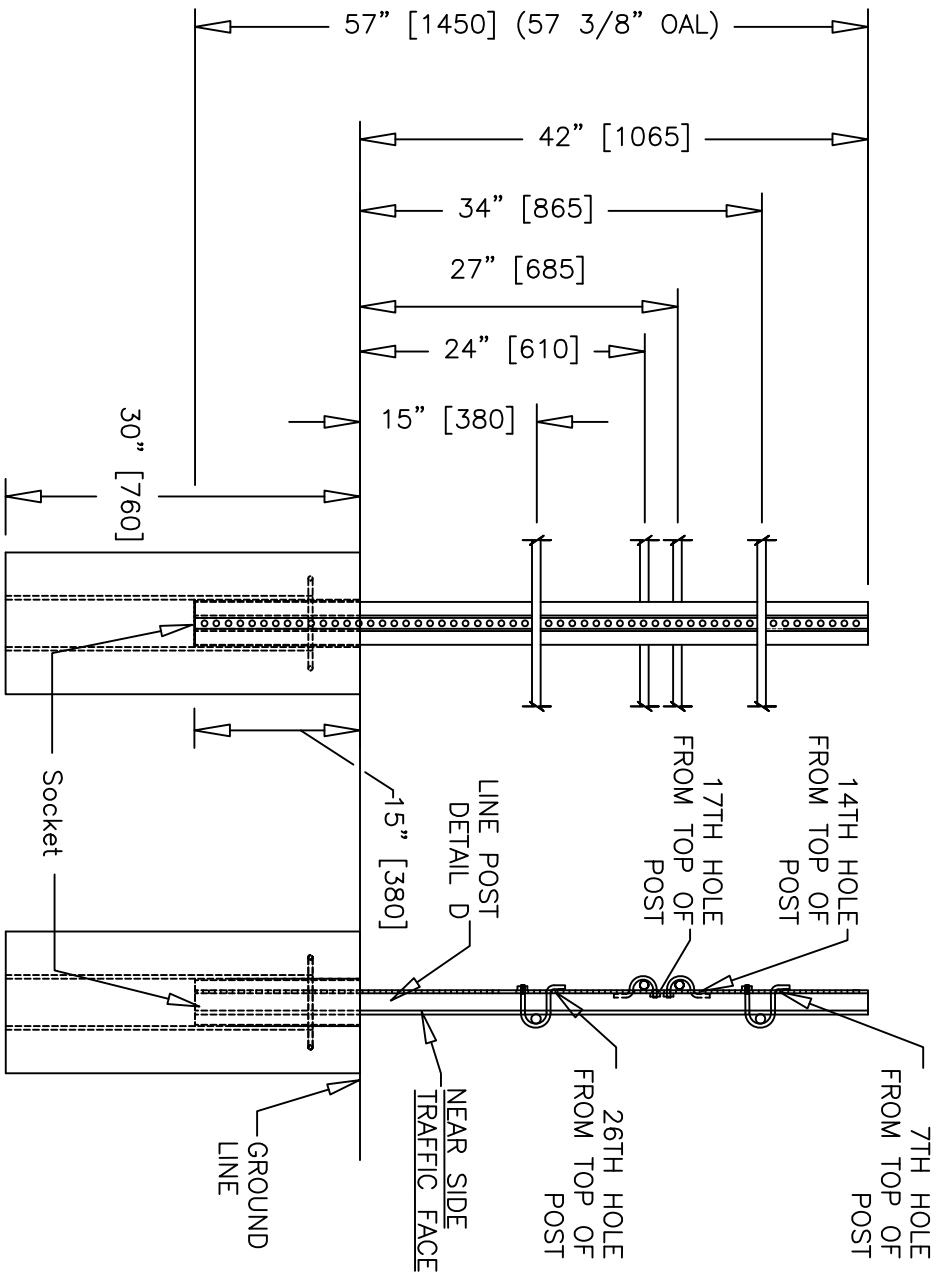
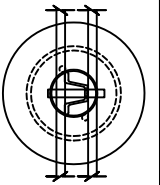


# TERMINAL POST 7

NOTE: CABLE HEIGHTS ARE TO THE MIDDLE OF THE CABLE.

## NU-CABLE™ - TL4 SYSTEM WITH CRP

Revisions			Nucor Steel Marion Inc 912 Cheney Ave, Marion OH 43302				
No.	Date	By	CK.	Project No.	Date	Drawn By	Scale
1.	7/17/08	CH		400001	2008/03/06	AWC	
2.	7/28/09	CH					
3.	10/1/09	CH					
4.	5/23/11	CH					
5.							

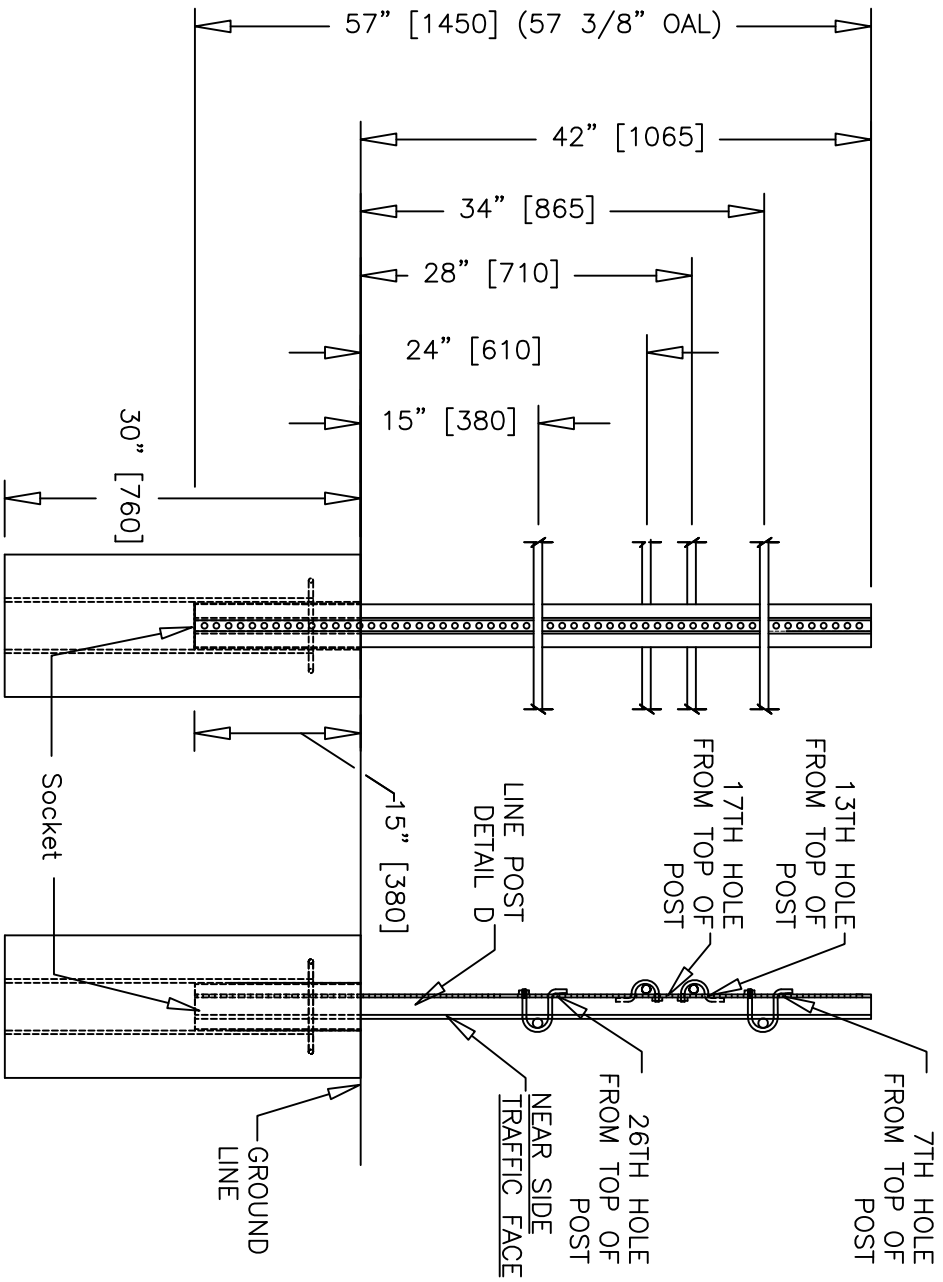
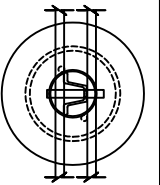


# TERMINAL POST 8

NOTE: CABLE HEIGHTS ARE TO THE MIDDLE OF THE CABLE.

## NU-CABLE™ - TL4 SYSTEM WITH CRP

Revisions			Nucor Steel Marion Inc				
No.	Date	By	CK.	Project No.	Date	Drawn By	Scale
1.	7/17/08	CH		912 Cheney Ave, Marion OH 43302			
2.	7/28/09	CH		400001	2008/03/06	AWC	
3.	10/1/09	CH					
4.	5/23/11	CH					
5.							



# TERMINAL POST 9

NOTE: CABLE HEIGHTS ARE TO THE MIDDLE OF THE CABLE.

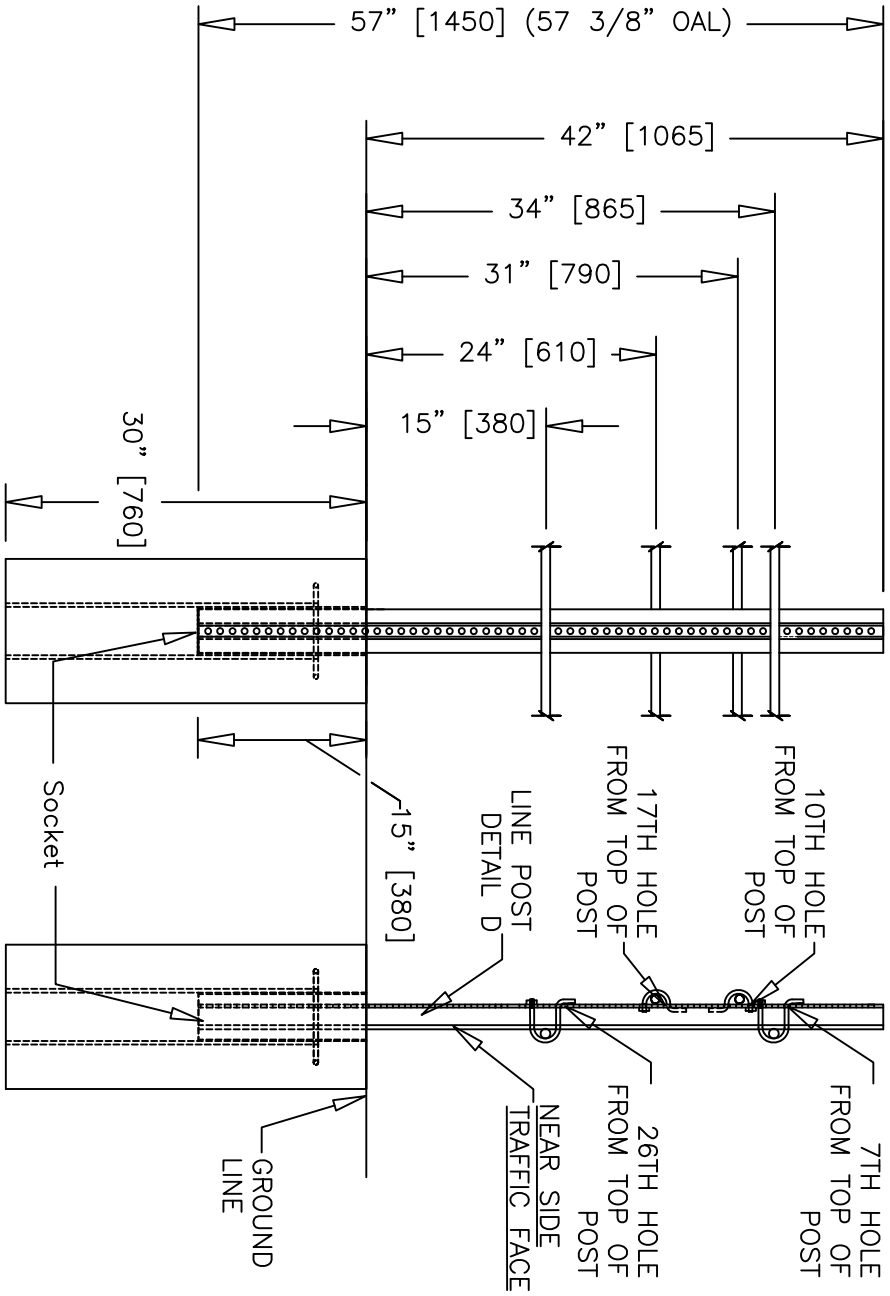
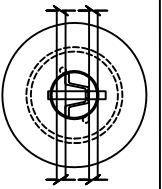
## NU-CABLE™ - TL4 SYSTEM WITH CRP

### Revisions

No.	Date	By	CK.	Project No.	Date	Drawn By	Scale
1.	7/17/08	CH		400001	2008/03/06	AWC	
2.	7/28/09	CH					
3.	10/1/09	CH					
4.	5/23/11	CH					
5.							

Nucor Steel Marion Inc  
912 Cheney Ave, Marion OH 43302





# TERMINAL POST 10

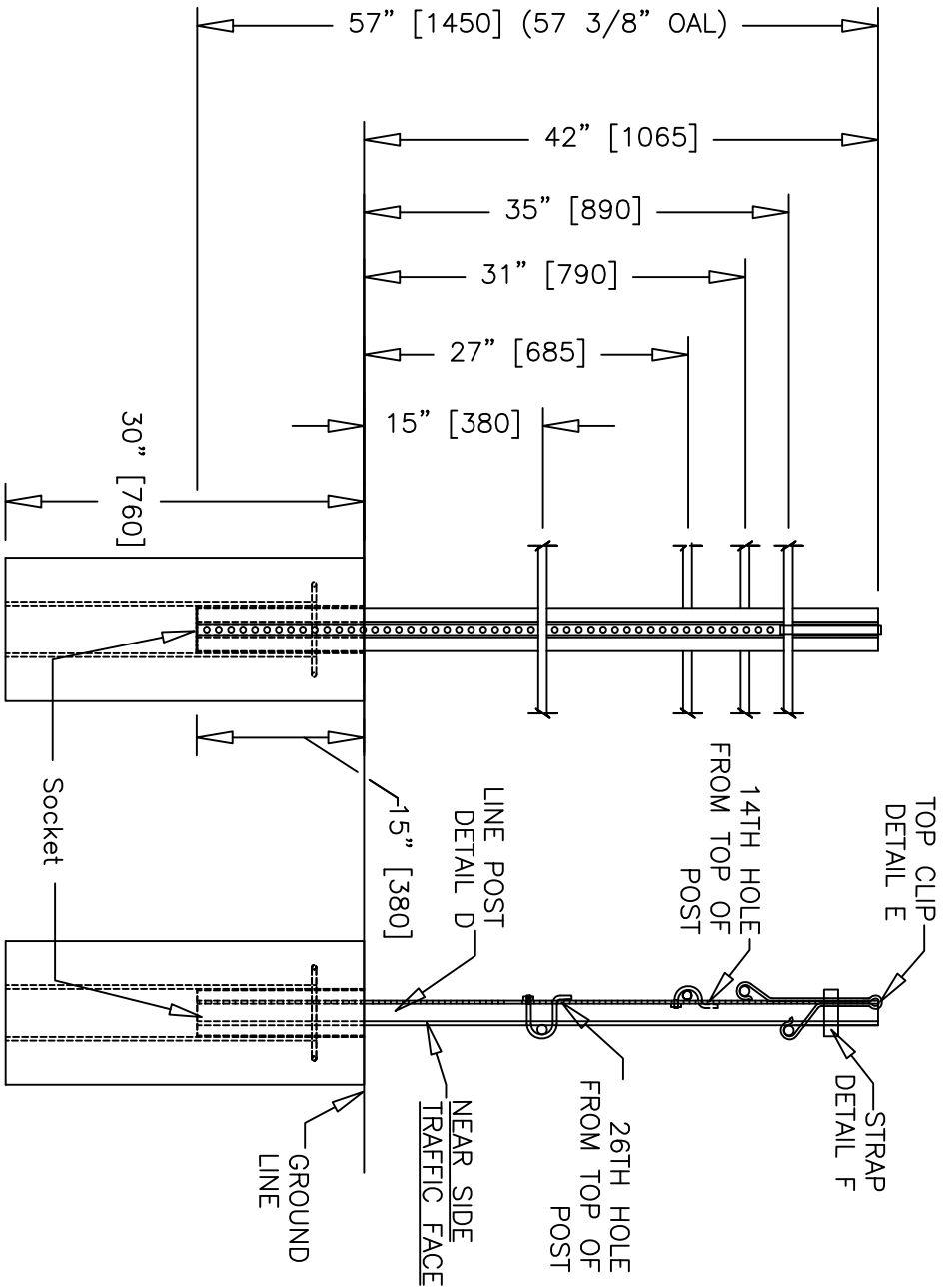
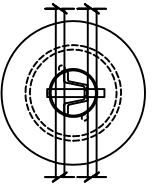
NOTE: CABLE HEIGHTS ARE TO THE MIDDLE OF THE CABLE.

## NU-CABLE™ - TL4 SYSTEM WITH CRP

### Revisions

No.	Date	By	CHK.	Project No.	Date	Drawn By	Scale
1.	7/17/08	CH		400001	2008/03/06	AWC	
2.	7/28/09	CH					
3.	10/1/09	CH					
4.	5/23/11	CH					
5.							

Nucor Steel Marion Inc  
912 Cheney Ave, Marion OH 43302



# LENGTH OF NEED POSTS MEDIAN CONFIGURATION

NOTE: CABLE HEIGHTS ARE TO THE MIDDLE  
OF THE CABLE.

## NU-CABLE™ - TL4 SYSTEM WITH CRP

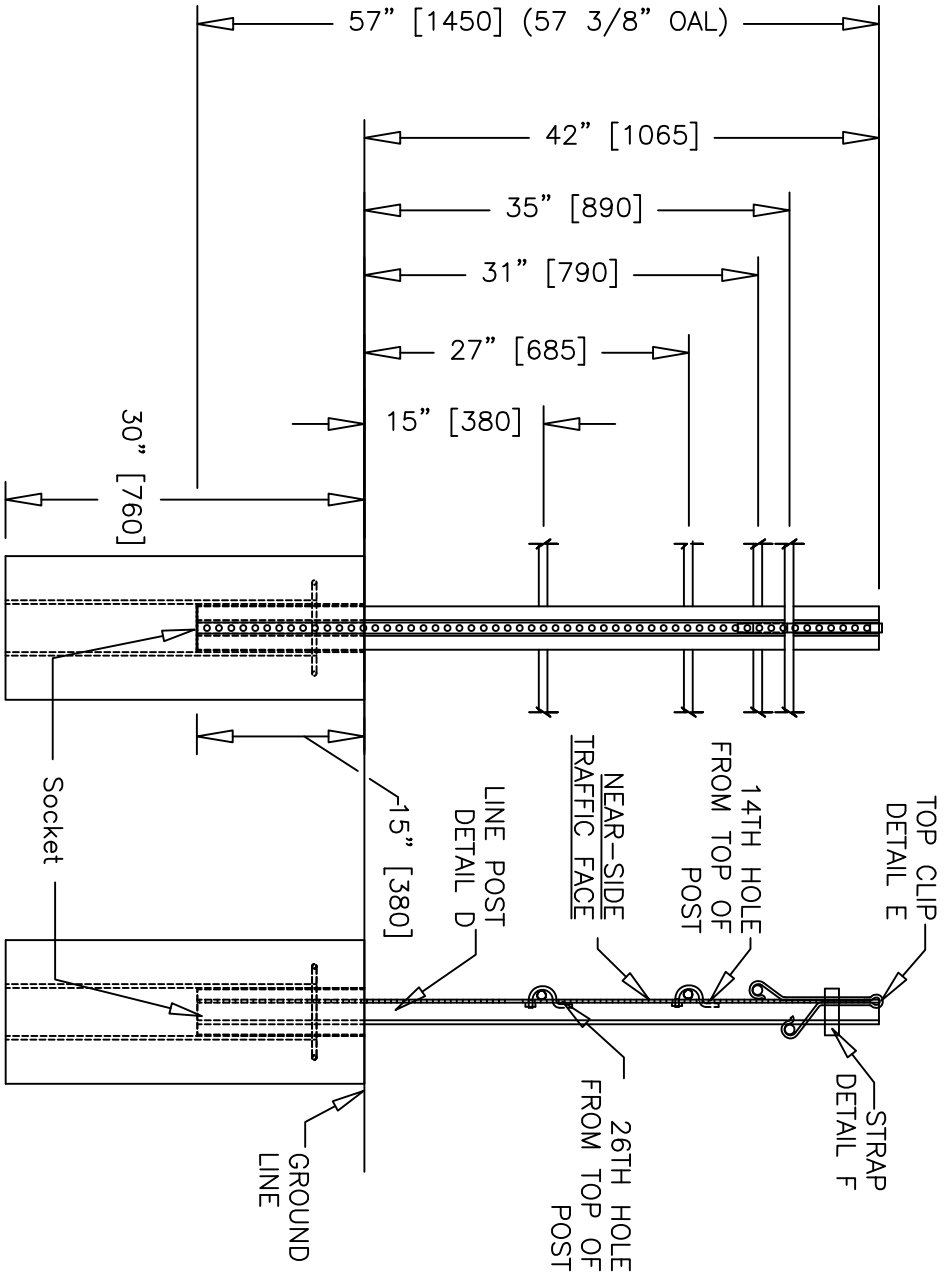
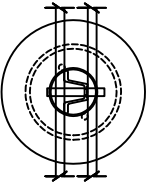
Revisions		Nucor Steel Marion Inc	
No.	Date	By	CK.
1.	7/17/08	CH	
2.	7/28/09	CH	
3.	10/1/09	CH	
4.	5/23/11	CH	
5.			

Project No.		Date		Drawn By		Scale	
400001		2008/03/06		AWC			

912 Cheney Ave, Marion OH 43302		Sheet No.	
		10 of 14	



# LENGTH OF NEED POSTS ROADSIDE CONFIGURATION

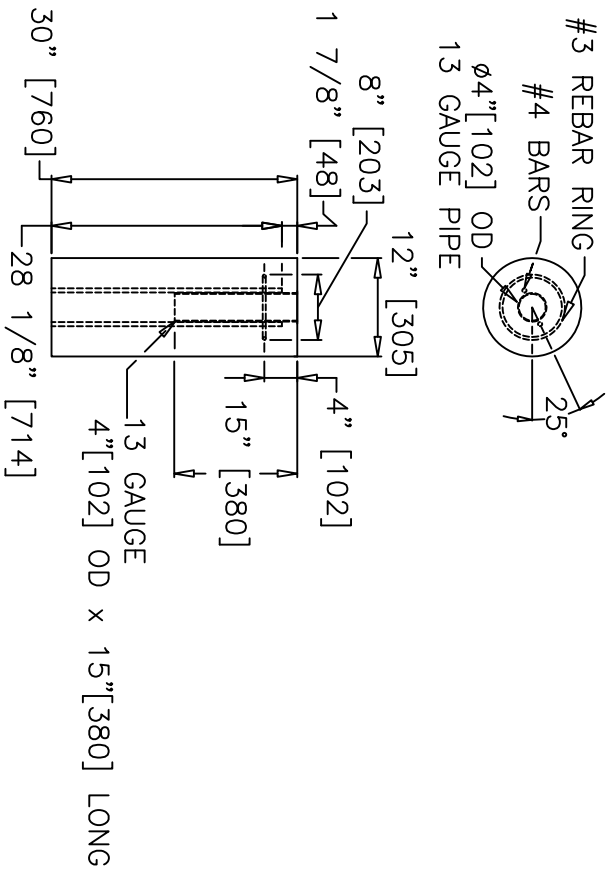
NOTE: CABLE HEIGHTS ARE TO THE MIDDLE  
OF THE CABLE.

## NU-CABLE™ - TL4 SYSTEM WITH CRP

Revisions			Nucor Steel Marion Inc 912 Cheney Ave, Marion OH 43302		
No.	Date	By CK	Project No.	Date	Drawn By AWC
1.	7/17/08	CH	400001	2008/03/06	AWC
2.	7/28/09	CH			
3.	10/1/09	CH			
4.	5/23/11	CH			
5.					

Footer shown with typical  
 embedment depth of 2' 6" [762].

Refer to project plans for  
 site specific footer requirements,  
 per agency specifications and  
 soil conditions.



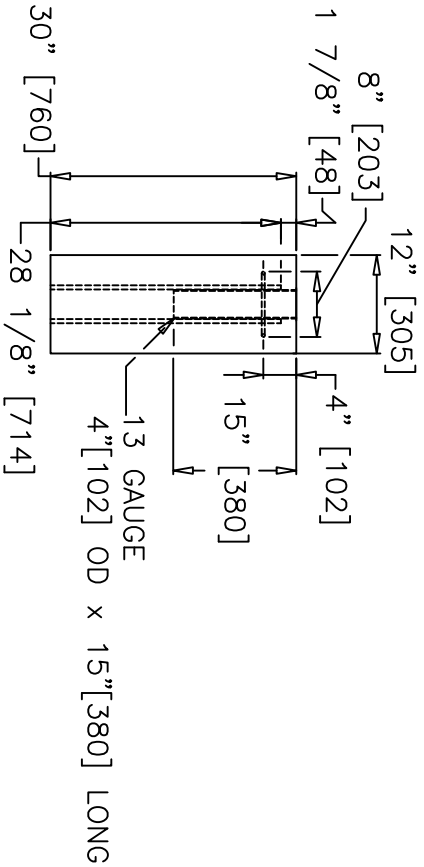
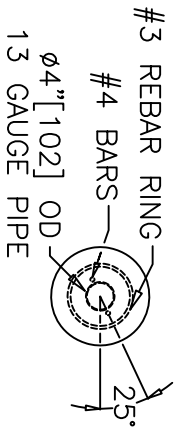
# DETAIL C

## LINE POST FOOTING

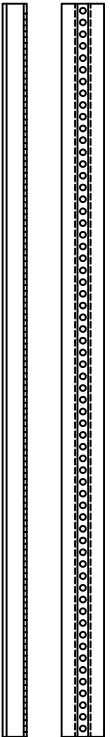
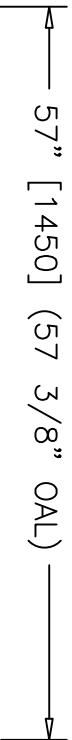
<b>NU-CABLE™ - TL4 SYSTEM WITH CRP</b>			
Revisions			
No.	Date	By	CK.
1.	7/17/08	CH	
2.	7/28/09	CH	
3.	10/1/09	CH	
4.	5/23/11	CH	
5.			
Nucor Steel Marion Inc 912 Cheney Ave, Marion OH 43302			
Project No.	Date	Drawn By	Scale
400001	2008/03/06	AWC	
Sheet No.			12 of 14

Footer shown with typical  
embedment depth of 2' 6" [762].

Refer to project plans for  
site specific footer requirements,  
per agency specifications and  
soil conditions.



DETAIL C  
LINE POST FOOTING



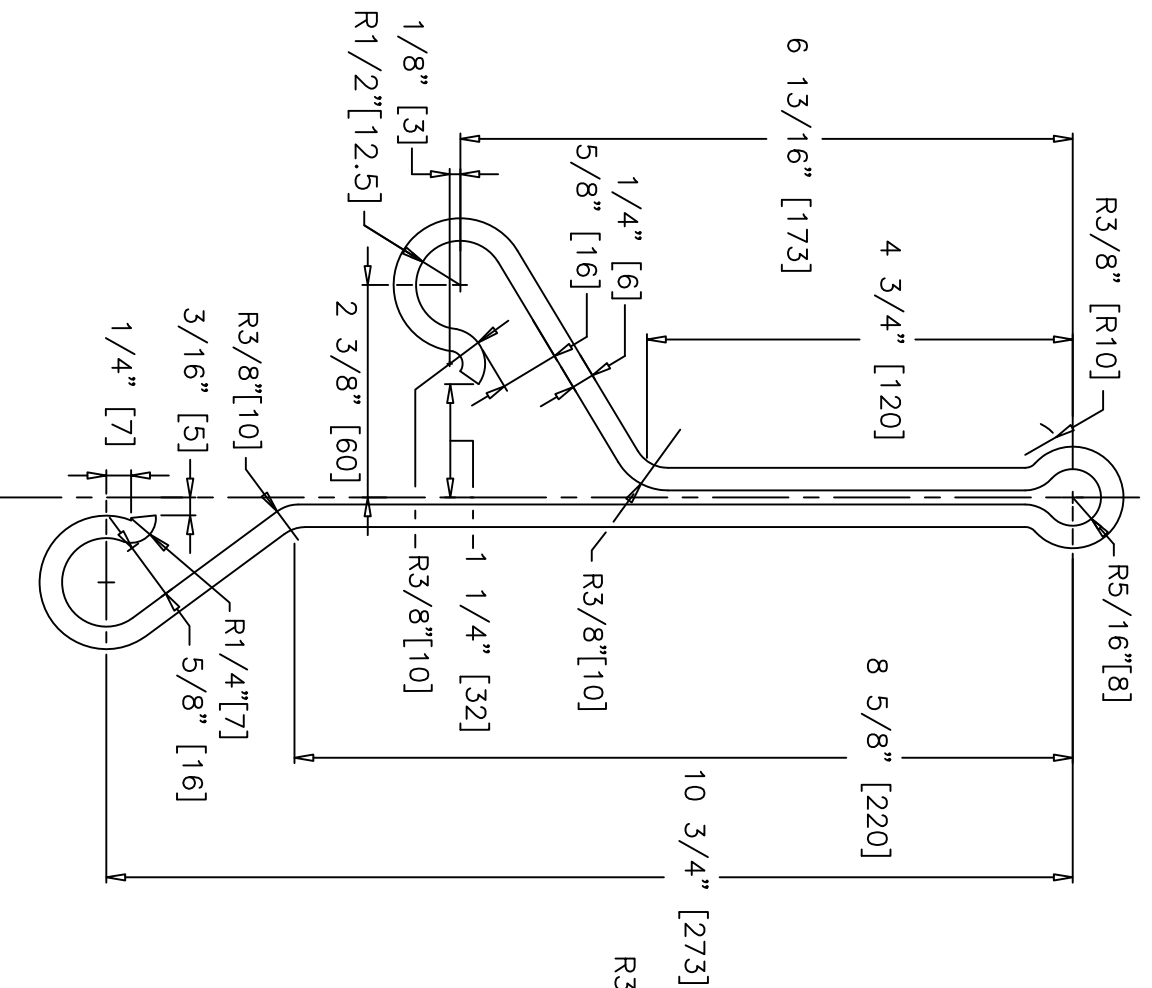
DETAIL D  
FLANGED CHANNEL POST

NU-CABLE™ - TL4 SYSTEM WITH CRP

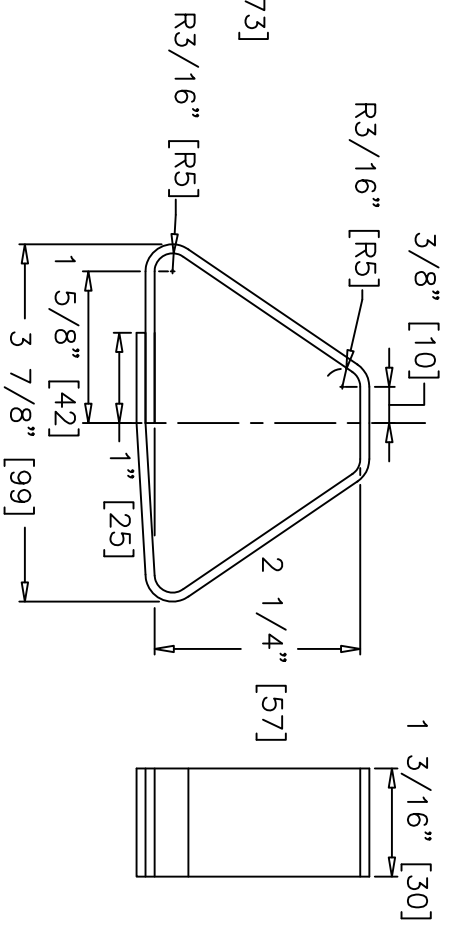
Revisions

No.	Date	By	CK.	Project No.	Date	Drawn By	Scale
1.	7/17/08	CH		400001	2008/03/06	AWC	Sheet No. 13 of 14
2.	7/28/09	CH					
3.	10/1/09	CH					
4.	5/23/11	CH					
5.							

Nucor Steel Marion Inc  
912 Cheney Ave, Marion OH 43302



DETAIL E  
1/4" x 3/4" TOP CLIP



DETAIL F  
STAINLESS STRAP

NU-CABLE™ - TL4 SYSTEM WITH CRP

Revisions			Nucor Steel Marion Inc 912 Cheney Ave, Marion OH 43302				
No.	Date	By	CK.	Project No.	Date	Drawn By	Scale
1.	7/17/08	CH		4000001	2008/03/06	AWC	
2.	7/28/09	CH					
3.	10/1/09	CH					
4.	5/23/11	CH					
5.							